

Katy Christian Ministries *est. 1984*

Mission: "Transforming lives through God's grace and the generosity of the community"

Vision: "Self-sufficient communities through Christ's love"

4 CORE PROGRAMS

SOCIAL SERVICES CRISIS CENTER
FOOD PANTRY RESALE STORES

21 SUB PROGRAMS

- A Turkey for Every Table
- Community Food Fairs
- Community Garden
- Counseling
- Integrated Client Journey
- Happy Feet
- Birthday Closet
- Health Benefits Access
- Homework Buddies
- Job Readiness
- Kids Summer Snacks
- Night of Beauty
- Resiliency FIRST
- Red Apple School Supplies
- Operation Easter
- Santa's Sleigh Christmas Gift Distribution
- Share Your Holidays
- Silent Witness
- Support Groups
- Veterans Assistance
- 24/HR Crisis Hotline

*Building Relationships that
Strengthen our Community!*

2022 IMPACT REPORT



Impact Report made possible thanks to

kcm.org | info@kcm.org | 281-391-5261 | PO Box 986, Katy, TX 77492

LEADERSHIP



A message from our Executive Director, Deysi Crespo, MSW

In 2022, the remarkable achievements we experienced at Katy Christian Ministries were made possible thanks to YOUR unwavering support, and for that, we extend our deepest gratitude to friends near and far. Our faith-based, Christ-centered approach has kept us united in love and purpose, allowing us to witness the completion of our new headquarters at 3506 Porter Rd. Through the selfless dedication of numerous volunteers and supporters, we successfully transitioned our Food Pantry, Social Services, and Administration operations to the new location. In a time of economic challenges, Katy Christian Ministries (KCM) compassionately provided hope and assistance to thousands of families whose needs surpassed those of previous years. Embracing our core value of Transformation, we continue to strive for the empowerment and improved quality of life for each client served through KCM's vital programs and services.

2023 BOARD OF DIRECTORS

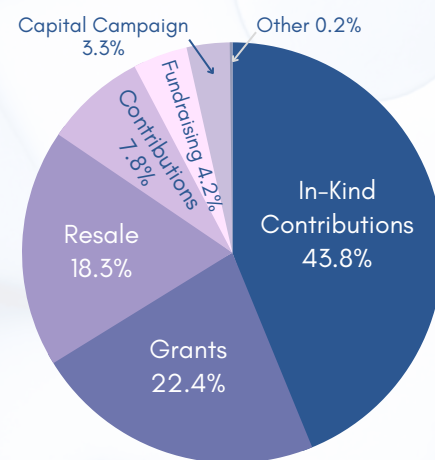
President: Becce Wallace
Vice President: Anita Mancini
Secretary: Stan Simmons
Treasurer: Kevin Hollis
Parliamentarian: Don Flowers
Past President: Patti Lacy
Executive Director: Deysi Crespo

Kent Black	Barney Harris	Jason Smith
Stephen Blackmun	Rodolfo Lobera	Miranda Ware
Alfred Castillo, Jr.	Iain Murray	Penny Whited
Debbie DeLuca	George Puig	Patricia Wood

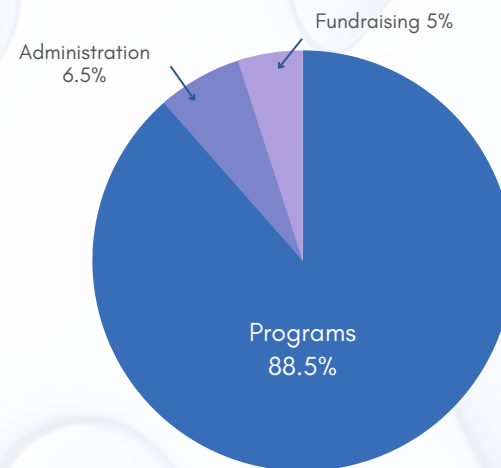


Sixty-five Katy area churches partner with KCM through monetary giving, volunteering, prayer support, and in-kind resources.

INCOME: \$7,102,218



EXPENSES: 7,219,702

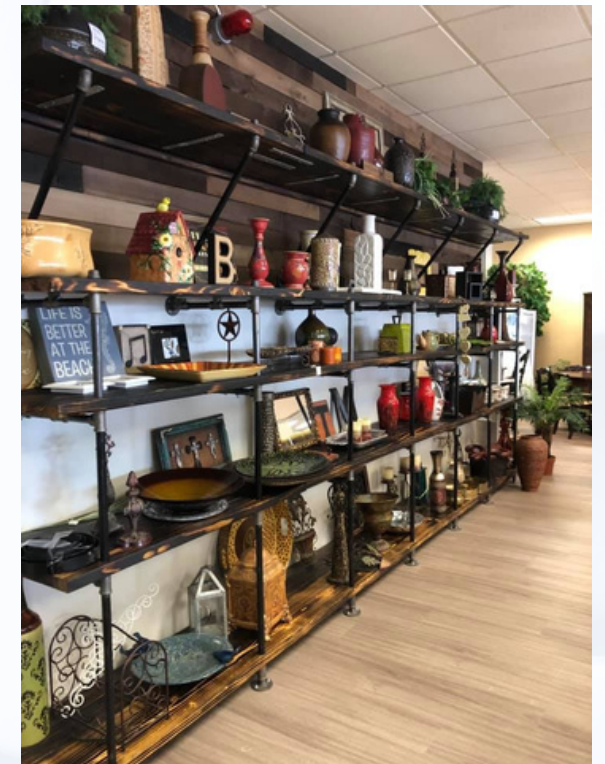


RESALE & DONATIONS



I love Katy Christian Ministries Resale Stores! I have been coming here since I was a child and they always make me feel welcome. They have the best deals and just when you think you're getting a great deal by looking at the price tag you get an even better deal when you go to the checkout register.

Jacinda - Loyal Customer



Good Deals | GREAT CAUSE

Funds generated by the KCM Resale Stores provide for both operational and program support. Client families with household or clothing needs are provided with vouchers through Social Services and/or the Crisis Center. These vouchers are at no cost to the families.

14,801

Volunteer hours served in the Resale Stores last year

\$1,304,419

Funding generated for the ministry by KCM Resale Stores



226

Total vouchers given to KCM Clients to use at the KCM Resale Stores for clothing and items needed in their homes

\$9,400+

Dollar value of vouchers redeemed

Building **A STRONGER COMMUNITY** *together*

ONLINE Resale shopping from the comfort of your own home.
Scan the QR code now to browse [KCMResale.com](https://www.kcmresale.com)!



CRISIS CENTER

Offering hope, help, and safety through God's grace and unfailing love to those affected by Domestic Violence and Sexual Abuse. Providing support, education, and resources to meet the needs of survivors in the community and surrounding areas.

3,137 VICTIMS SERVED*

of Domestic Violence and Sexual Abuse were assisted through the KCM Crisis Center

1,116

HOTLINE CALLS

from victims of Domestic Violence, Sexual Abuse, or individuals in need of crisis counseling



1,614

Domestic Violence Crisis Intervention Sessions

1,523

Sexual Abuse Crisis Intervention Sessions

143

ACCOMPANIMENTS

made with victims to the hospital, court, law enforcement



85

VICTIMS

served through support groups

871

MENTAL HEALTH

counseling sessions provided by therapists



357

VICTIMS

served through professional counseling

24/7 HOTLINES

habla español

281.391.HELP (4357)

Domestic Violence Hotline
Violencia Domestica

281.693.RAPE (7273)

Sexual Abuse Hotline
Abuso Sexual

I thank God for this organization that has helped me during the hardest moments of my life. As a victim of domestic violence, they helped me with counseling, provided guidance and orientation to be safe with my children during this difficult time. I will always be grateful with all my heart for all the help they provided.

Mrs. Delia C.

*These are both Primary and Secondary clients
A secondary victim includes those in the home who were witness to the abuse, including children

VOLUNTEERING



"I'M HONORED & BLESSED"
KCM Food Pantry Volunteer

I began volunteering at the KCM Food Pantry to help fill my days after my wife's death. It quickly became apparent that it's a labor of love for the staff and volunteers that help so many in our community. I'm honored and blessed to be able to contribute to such a worthy organization and have fun doing it!

54,871

HOURS
were served by
dedicated
volunteers in
2022.

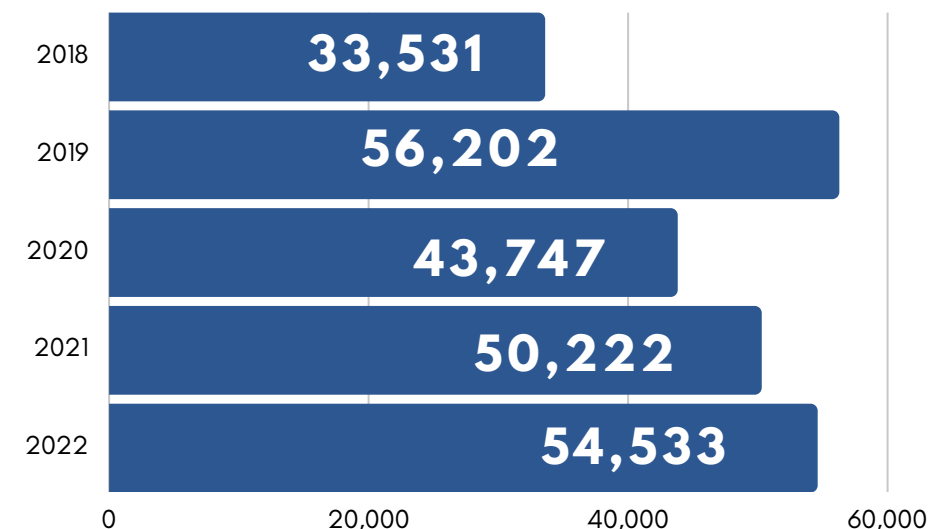
3,518

INDIVIDUALS
dedicated volunteers
chose TIME as a way to
give back to their
community through KCM.

31

GROUPS
different groups
volunteered one or
more times
throughout 2022.

VOLUNTEER HOURS SERVED



\$1,555,826

Dollars saved by utilizing
volunteer hours



Your one-time gift or monthly pledge help our ministry continue to make an impact, please scan the QR code and donate today.







Volunteering is a GREAT way to give back to your community! Scan the QR code to see KCM's current volunteer opportunities.



SOCIAL SERVICES

BY THE NUMBERS

-  **\$407,863**
BASIC NEEDS ASSISTANCE
distributed to families at high risk for eviction & homelessness, loss of utility services, or other essential needs
-  **\$482,959**
DISASTER RELIEF ASSISTANCE
distributed to families affected by COVID-19 and other disasters
-  **998**
CHILDREN
assisted with school supplies through Red Apple program
-  **3,604**
CHILDREN & SENIOR ADULTS
assisted with Gifts for Christmas through the Santa's Sleigh program

34,561 Case Management Sessions

- 6,539** United Way 211 Hotline assistance referral calls made to KCM
- 882** Individuals assisted with applications for Medicaid, Medicare, SNAP, TANF, GOLD, CHIP
- 201** Individuals served with gas cards
- 261** Veterans assisted via the Help a Hero Program
- 743** Individuals served through the Happy Feet Program
- 219** Easter Baskets given to local children via Operation: Easter
- 25** Tutoring and mentoring sessions through the Homework Buddies program

"Katy Christian Ministries is a great organization, very helpful to our community and very willing to help Veterans and their families."

KCM Veteran Client



HOW TO ORGANIZE A FOOD DRIVE

- 1 Choose a location!** Your church, school, where ever you decide.
- 2 Decide what kind of items you'll be collecting and spread the word!** (Here's a hint!) Set a timeline and coordinate with the KCM Food Pantry.
- 3 Let the drive begin!** The KCM Food Pantry is open Monday - Thursday, 9AM - 4PM for donation drop-off.



1,381,900
MEALS

distributed to food insecure families



1,658,280
POUNDS

distributed to food insecure families



\$3,183,898
DOLLAR VALUE

of food distributed

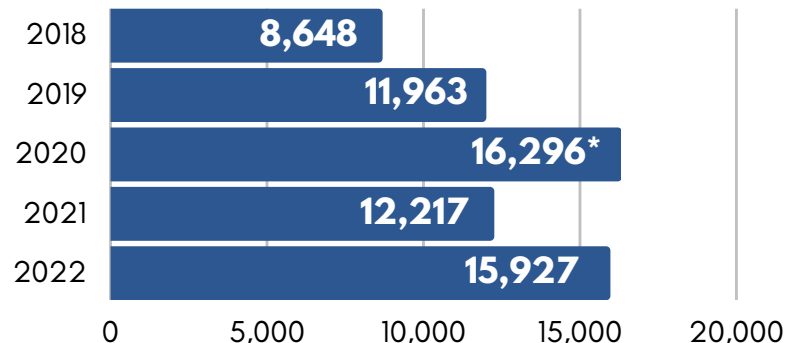


7,388
TOTAL FAMILIES SERVED

Unduplicated families served throughout 2022

TOTAL FAMILIES SERVED IN 2022

(face-to-face and by telephone)

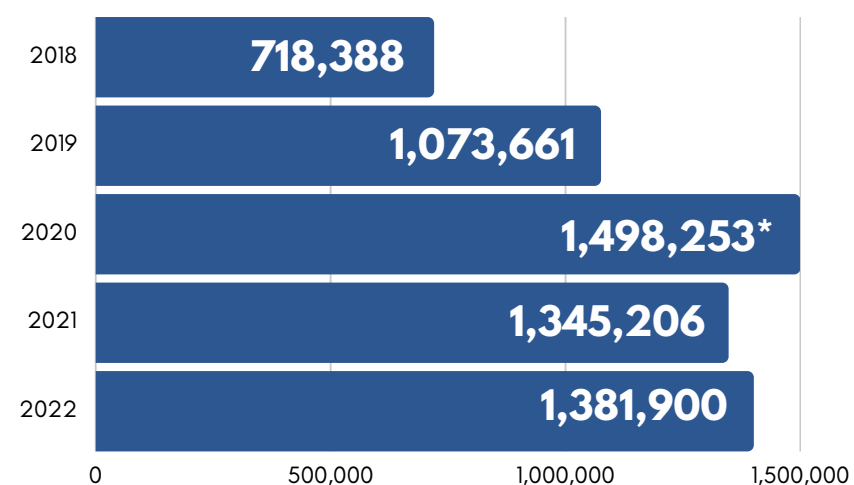


*COVID-19 Pandemic

"Because of my disability, I almost became homeless. I contacted KCM and they went above and beyond my expectations in helping me on my road to recovery. I can sleep at night now. I will always be grateful to you for helping me through this situation. God bless KCM."

Hal M. Social Services Client

TOTAL MEALS DISTRIBUTED BY KCM



*COVID-19 Pandemic

With your support, WE can continue to make a difference together!
Scan the QR code now to donate and help us uplift local families today.



As our community changes, so do our NEEDS!
Scan the QR code now to stay up to date with the KCM Food Pantry.

